



THE MARIN PHUKET



As Thailand's largest island, "Phuket", located in the Andaman Sea off the southern part of Thailand, has a fantastic array of attractions fulfilled with outstanding natural beauty and undoubtedly recognized by tourists worldwide as one of the most famous destinations you must visit once in your lifetime. Phuket, as it is called "Pearl of the Andaman", also offers an abundance of unique traditions, culture, well-hidden natural resources and of course its mouthwatering local dishes and delicacies. In 2017, Euromonitor International ranked the most visited cities by international tourists and Bangkok ranked the second most visited city in the world, whilst Phuket won the eleventh place. Recently, a large increase in tourist numbers paralleled with 106,093 flights to Phuket; 52,609 domestic flights and 53,484 international flights and it tends to increase unceasingly. Therefore, investors worldwide are allured by its good location and constantly faster economic growth.





THE MARIN PHUKET

CONCEPT OF THE PROJECT

“

LIVING LIFE TO ITS FULLEST
HAPPY RELAXATION IS OUR
MOST IDEAL LIFESTYLE
FILLED TO THE BRIM WITH
IMAGINATION.

”

THE MARIN PHUKET

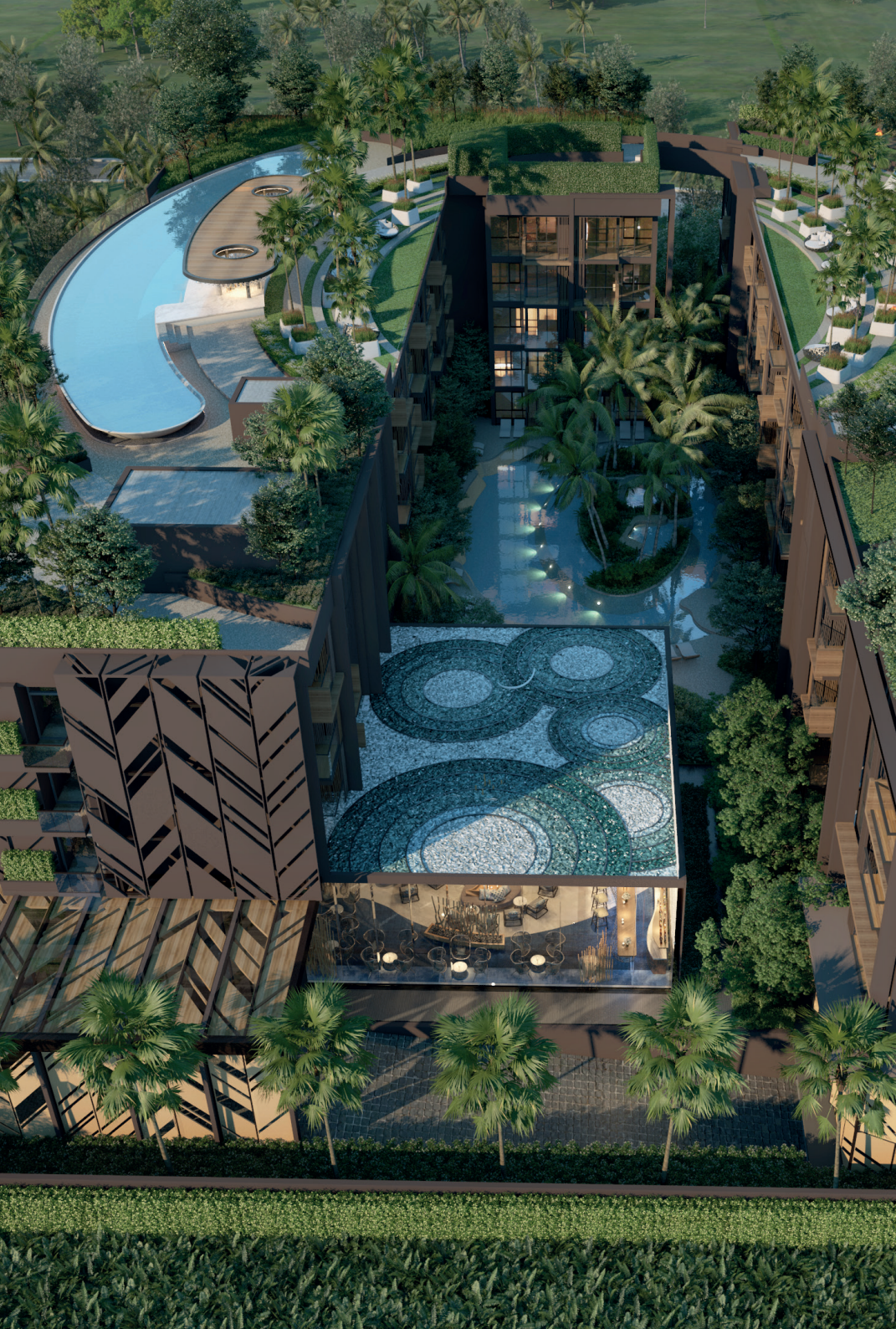
Let's imagine ourselves on beautifully vast sea and go for a change of air with luxurious, comfortable, relaxing and tranquil atmosphere that everyone desires.

'THE MARIN PHUKET' project is therefore originated with the perfect combination of beautifully marine design and uniquely luxurious relaxation fulfilled with imagination and elegance. We meticulously choose high quality materials to build and we also position utility space perfectly together with fully equipped common property.

SO YOU DESERVE TO OWN THE MARIN PHUKET







FACILITIES

THE MARIN PHUKET has a uniquely beauty and differentiated with 4 stylish swimming pools with Jacuzzi tub you can enjoy with your family. Our large-sized lobby is designed elegantly as though floating under fantasy sea. What's more, our highlight is the roof-deck of two buildings connected by bridge where you can choose to relax at bar nearby swimming pool or sunbathe and breathe fresh air at large roof-deck garden. There are also restaurants, fitness, kids room has to offer throughout your great relaxation.

- Luxury hotel lobby
- 4 Swimming Pools, 3 Jacuzzi
- Roof Deck Garden
- Dining-room
- Kids room&Fitness
- Digital card unit access
- 24 Hour Security
- Internet wifi



LOBBY

With luxurious 5 star hotelstyle, our lobby is designed to fulfill truly fantasy sea, consisting with living room corner, reading corner with varieties of beverages bar ready to service throughout the day.



SWIMMING POOL

There are different 3 swimming pools on ground floor:

First swimming pool : you will feel like you are swimming around beautiful island and you can feel luxurious relaxation with 2 Jacuzzi's

Second and third swimming pools : they parallel with the building where privately peaceful atmosphere is found with pool access room.

Fourth swimming pool : located on roof deck, swimming pool is uniquely designed together with pool bar and uniquely large sized Jacuzzi tub you can enjoy soaking warmly with family or parties.





DINING-ROOM

Our dining-room is designed to make you feel like having a relaxing dining on magnificent fishing vessel at sea.

KIDSROOM

Kids can be encouraged their unlimited ideas and imagination in this room with enjoyable pirate ship.

FITNESS

Fully equipped fitness equipment ready for healthy lover.

CORRIDOR

Caring for your real relaxation, we meticulously choose rugs that reduced disturbance sound while walking.





ROOM TYPE B

53.10 SQ.M.

1 Bedroom

1 WC



THE MARIN PHUKET

LOCATION : KATHU, KAMALA, PHUKET

KAMALA BEACH	100 M.
CAFÉ DEL MAR PHUKET	100 M.
PHUKET FANTASEA	200 M.
THAI BANK	1 KM.
BIG C SUPERMARKET	1.2 KM.
SURIN BEACH	2.7 KM.
BANGTAO BEACH	4 KM.
VILLA MARKET	7 KM.
CATCH BEACH CLUB	7 KM.
PATONG BEACH	10 KM.
PHUKET INTERNATIONAL AIRPORT	20 KM.
PHUKET OLD TOWN	21 KM.
PROMTHER CAPE	30 KM.
CENTRAL PHUKET	30 KM.

- LOCATION -

THE MARIN PHUKET is in a perfect location just 100 meters from the Kamala beach attracts lots of high potential tourists with a wide range of amazing places of recreation such as well known CAFÉ DEL MAR / HQ BEACH CLUB located nearby PHUKET FANTASEA where millions of tourist flock to visit hugely popular performance. It is also located not far from convenient store, super market, banks and entertainment venues.



DEVELOPER'S PROFILE : PHUKET SMILE (THAILAND) CO., LTD.

We are 3 experienced joint venture companies of property development led by **KAYUN KRAN KIET Co., Ltd.**, a principal contractor in Phuket with outstanding hotel and condominium construction works such as Duangjitt hotel, Patong Bay Hill project, Laguna park project, Maikhao Palm Beach Resort project, Ramada Plaza Chaofa and The Panora Phuket and many others in Phuket, collaborated with **THANABATCHAI Co., Ltd.** that guaranteed with more than 50 years extensive experience in land trading and leasing as well as real property development with more than 4,800,000 square meters (3,000 Rai) located in different provinces and places like Phuket, Chiang Mai, Chiang Rai, Surat Thani, Koh Samui island, Koh Pa-ngan island, Nonthaburi, Pathumthani, Chonburi, Bangkok and **ILE AGENCY & DEVELOPMENT Co. Ltd.**, leading project management consulting company including sales and international market. The successfully distinguished project management that completed within 2 years like The Panora Phuket condominiums seaview and another 2 projects in process like The Panora Pool Villas and The Panora Pattaya with total value of 3 projects: more than 5,400 million Baht. Managed by our experienced sales and marketing team.

