

ANAMAYA

SAMUI

An exclusive villa development with panoramic sea views

KOH SAMUI

A beautiful tropical island sheltered in the crystal clear waters of the Gulf of Thailand with secluded coves and white sandy beaches fringed with palm trees - beaches that holidaymakers dream about. Inland the island boasts lush green rolling hillsides and coconut groves, picturesque waterfalls and magnificent ocean views.

With its stunning natural beauty, warm tropical climate and one of the highest concentrations of five star resorts and fine dining restaurants in the world, Koh Samui is fast becoming one of the top tourist destinations in Asia.

Samui International Airport currently handles direct flights from Singapore, Hong Kong, Kunming and Kuala Lumpur, together with over 20 flights a day from Bangkok. The Civil Aviation Department recently granted permission for the airport to raise the number daily flights by 40% which will lead to increased new demand. Many new direct international routes are being discussed including Beijing, Shanghai and Macau.





LOCATION

Nestled within its tranquil, natural surroundings, Anamaya is only minutes from the island's most famous beaches, tourist attractions and restaurants. Take a stroll along beautiful Choeng Mon and Samrong Bay beaches, visit the golden statue of Big Buddha, dine in the charming restaurants of Fisherman's Village and enjoy the nightlife of Chaweng.



ANAMAYA

SAMUI

Anamaya is set on the north east peninsula of Samui island, with unequaled panoramic 270° views over the headland, the nearby island of Koh Phangan and the turquoise blue waters of the Gulf of Thailand. Rising to the peak of two hillsides facing both east and west, Anamaya is distinguished by its naturally beautiful setting, striking architecture and dramatic ocean views. Ancient banyan trees, giant boulders and remnant coastal rain forest give the site its special character.

A wide range of villa designs have been created to take full advantage of this exceptional setting, all sharing a contemporary, organic style and approach to tropical living. All villas have between three and seven guest bedrooms and offer expansive living and entertaining areas; generous ceilings give a sense of space and maximize the views while the interiors flow seamlessly to the terraces and infinity pool.

Smart technologies are built into each villa allowing energy efficient control over all aspects of water treatment, ventilation and cooling.

Anamya also features an exclusive private clubhouse, wedding piazza, sports centre, spa and children's playground, which together with the estate's five-star management will rival the best hotels - allowing owners and guests to enjoy a luxurious island lifestyle.





VILLA A1: 7+2 Bedrooms, 2,486m²



VILLA A

7+2 bedrooms, 2,486m²

These iconic villas will sweep you up and astound you with their fluid lines, dynamic sculptural poise and imaginative spatial experience. Sitting atop the three highest points of the Anamaya estate, these exceptional properties offer every luxury and amenity for the discerning guest. Taking its lead from the surrounding terrain, a series of terraces usher the landscape into the heart of the villas affording an intimate interaction between the garden and internal space.

Each villa features two infinity pools offering both sunrise and sunset vistas, an ocean view gymnasium, personal digital cinema and recreation rooms. All suites have uninterrupted ocean views and the 108m² master suite has panoramic views to both the east and west.

Extensive dining and relaxation areas are supported by full staff facilities, two fully equipped kitchens and entertaining space for up to 120 people, making these exceptional villas the perfect location for large family gatherings, groups and special occasions.

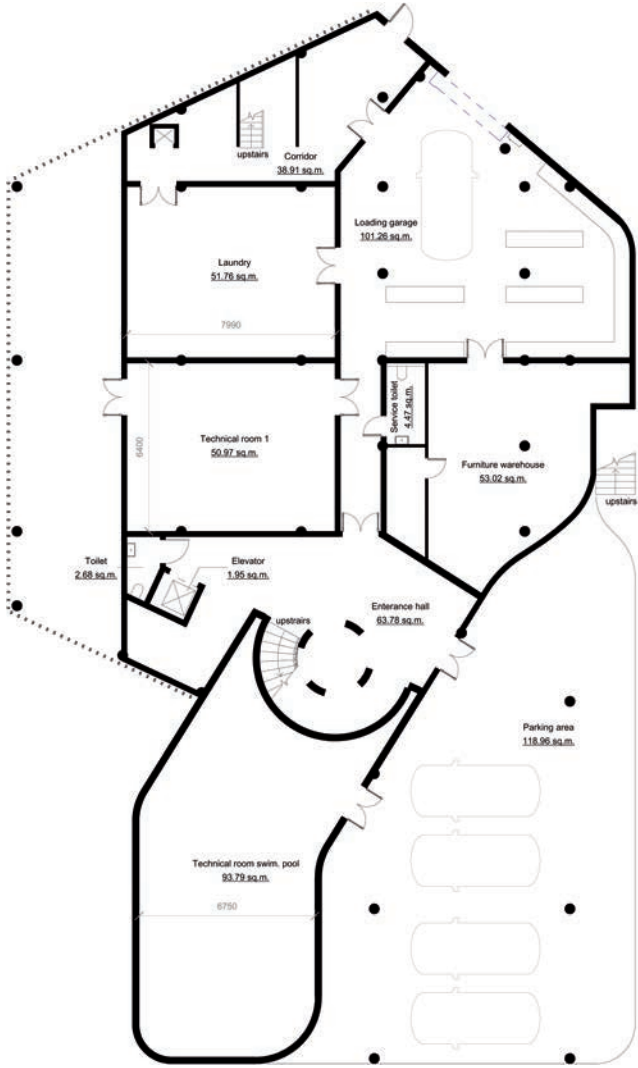




VILLA A

- ▶ 2,486m² indoor and outdoor living and entertaining space
- ▶ Panoramic 240° ocean views with both sunrise and sunset
- ▶ 1 x 108m² master suite with sunrise bedroom & sunset lounge
- ▶ 2 x 40m² twin queen suites with east or west sea views
- ▶ 4 x 36m² king suites with east or west sea views
- ▶ 2 x 80m² swimming pools with sunrise and sunset views
- ▶ Indoor and outdoor dining for up to 16 people
- ▶ Entertainment areas for up to 120 people
- ▶ Underground parking for 4 cars
- ▶ Elevator between all floors
- ▶ Central spiral staircase with integrated landscaping
- ▶ Gymnasium with panoramic sea views
- ▶ 20 seat digital cinema
- ▶ Children's play room
- ▶ Recreation room
- ▶ Smart home technology throughout
- ▶ Full service kitchen with dumb waiter to pool deck
- ▶ 2 bedroom staff quarters and service bay

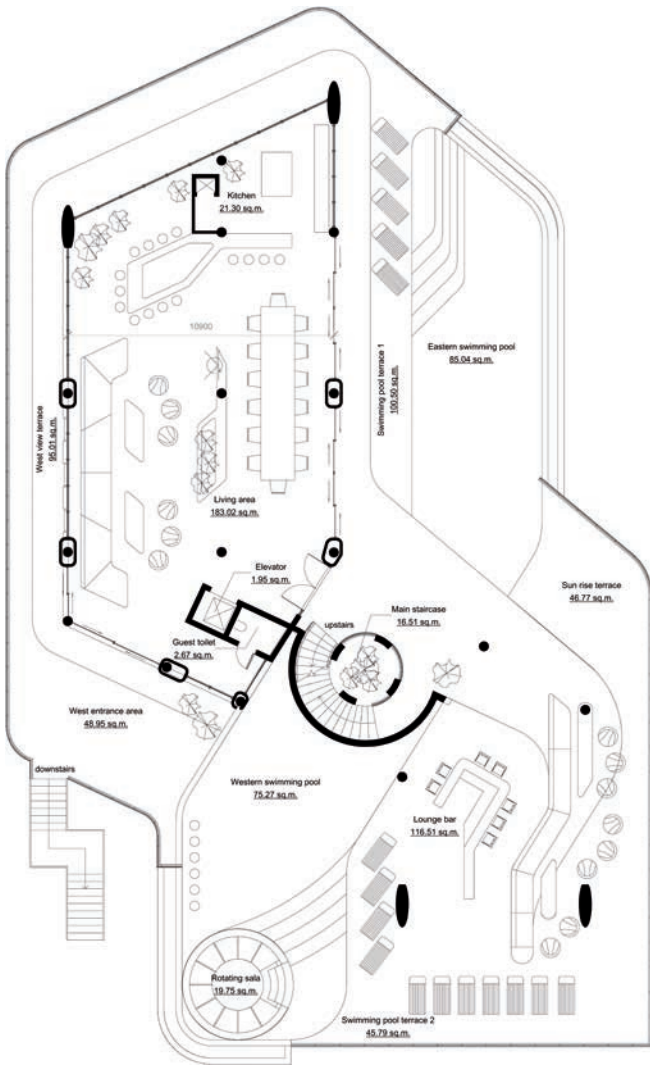
VILLA A
7+2 Bedrooms, 2,486m²



First Floor



Second Floor



Third Floor



Fourth Floor



VILLA B1: 6+1 Bedrooms, 1,568m²



VILLA B

6+1 bedrooms, 1,568m²

Set along the hilltop crest of the Anamaya estate, the architecture of these stunning contemporary villas follows the contours of the landscape, enabling a seamless flow between the two. Terraced patios, open decks and elevated living areas offer breathtaking panoramic views from within a private oasis.

The villa faces both east and west and features either two infinity pools or one pool and an ornamental water feature with sunken breakfast bar. The unique rotating pool sala provides a shaded open lounge area whatever the time of day.

All suites have spectacular sea views from their balcony or terrace and an abundance of open and private spaces in which to relax, entertain and party, including a private digital cinema, gym and recreation rooms.



VILLA B1: 6+1 Bedrooms, 1,568m²



VILLA B

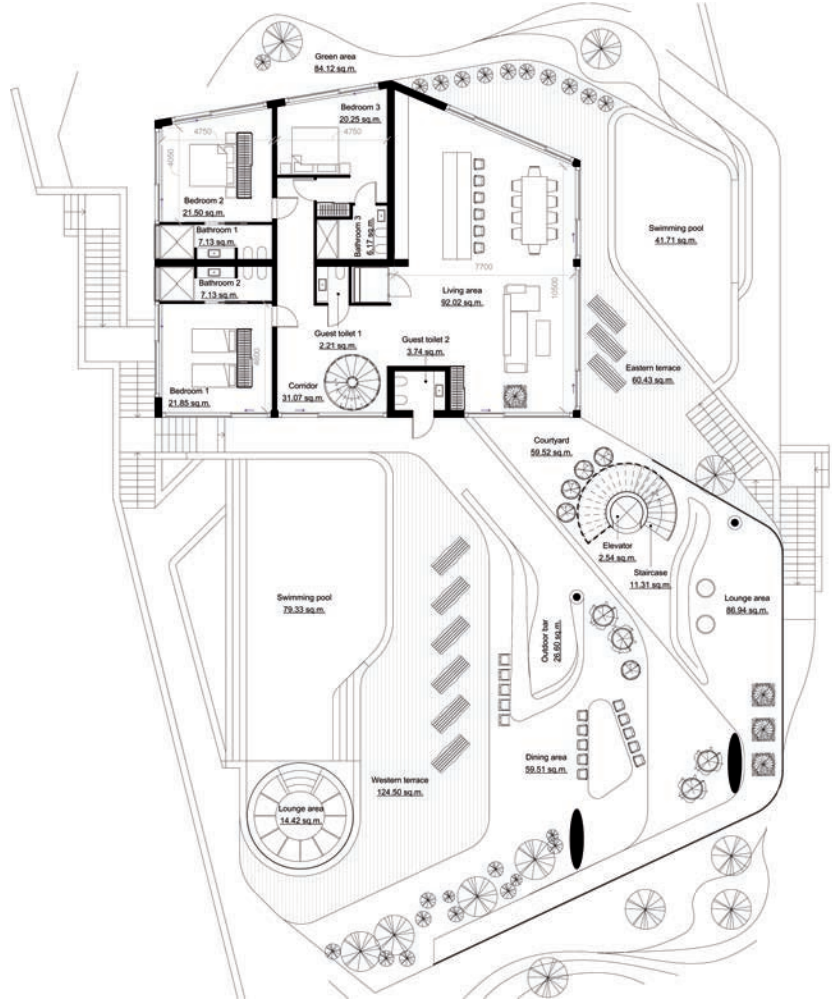
- ▶ 1,568m² of indoor and outdoor living and entertaining space
- ▶ 240° ocean views of both sunrise and sunset
- ▶ 1 x 40m² master suite with 65m² private Jacuzzi terrace
- ▶ 5 x 36m² king and twin suites with east or west sea views
- ▶ 75m² swimming pool with full sunset views
- ▶ Indoor and outdoor dining for up to 12 people
- ▶ Entertainment areas for up to 80 people
- ▶ Water feature with sunken breakfast bar
- ▶ Underground parking for 3 cars
- ▶ Hydraulic elevator from garage to main deck
- ▶ Central spiral staircase with integrated landscaping
- ▶ Gymnasium
- ▶ 12 seat digital cinema
- ▶ Children's play room
- ▶ Recreation room
- ▶ Smart home technology throughout
- ▶ 1 bedroom staff quarters



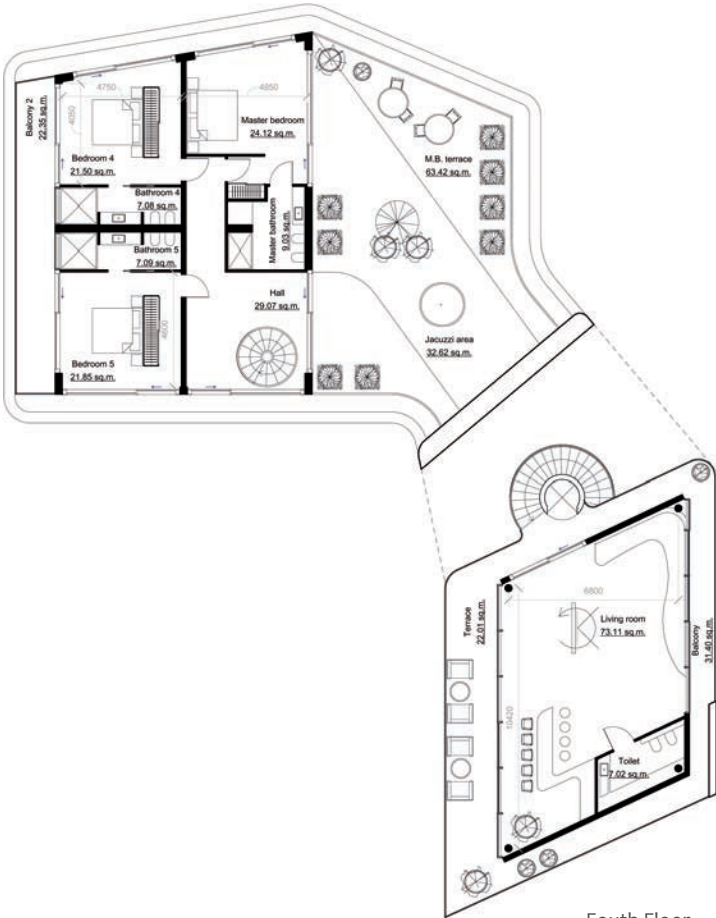
First Floor



Second Floor



Third Floor



Fourth Floor

VILLA B
6+1 Bedrooms, 1,568m²

VILLA C

These Anamaya villas combine the natural beauty of the landscape with a stylish, contemporary architectural design. At the heart of each is the spacious living and entertaining area which can be opened up entirely to the outdoor terrace, garden and private infinity pool.

Shaded and open to sea breezes, dramatic panoramic views make this the perfect place to relax. Indoors, a contemporary island kitchen with stunning views over the living area, terrace and pool provides a special place for entertaining.

C villas boast five large bedrooms, each with sea views from their balcony or terrace, digital cinema, gymnasium and recreation room. Villa C1 incorporates separate staff quarters, an additional recreation room and larger terraced entertaining area.



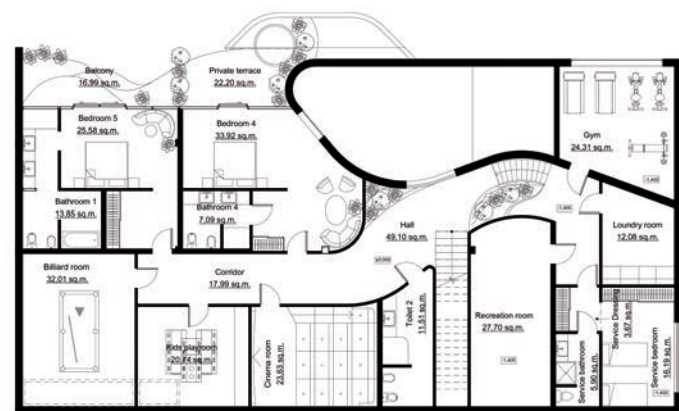
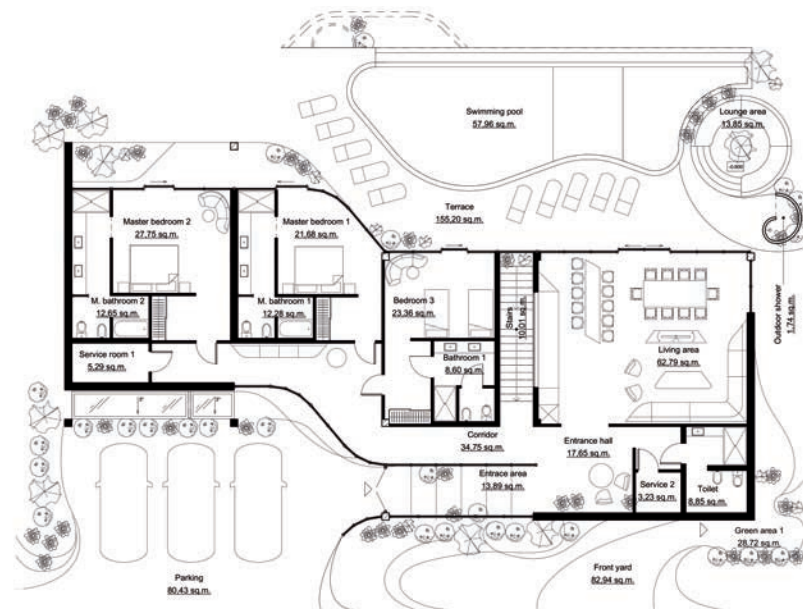
VILLA C2: 5 Bedrooms, 627m²



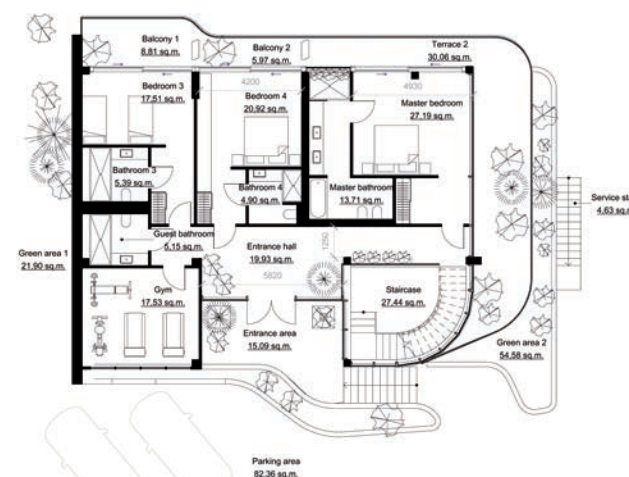
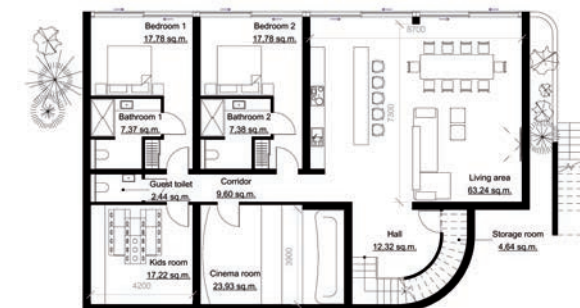
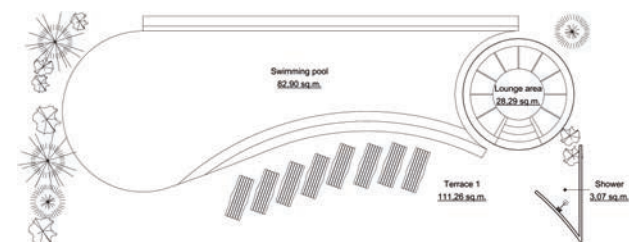
VILLA C2: 5 Bedrooms, 627m²

VILLA C1

5+1 Bedrooms, 1,083m²



VILLA C2 5 Bedrooms, 627m²





VILLA D1: 4 Bedrooms, 718m²

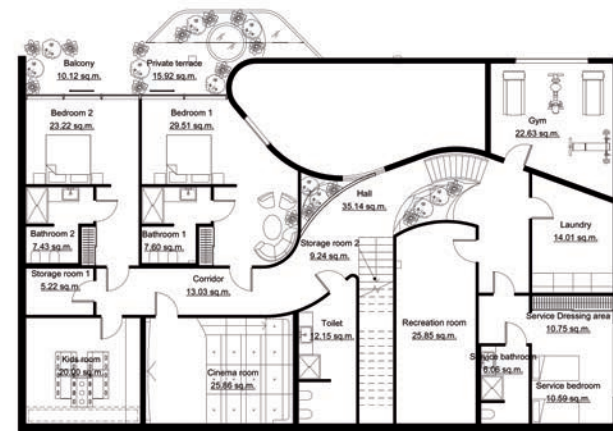
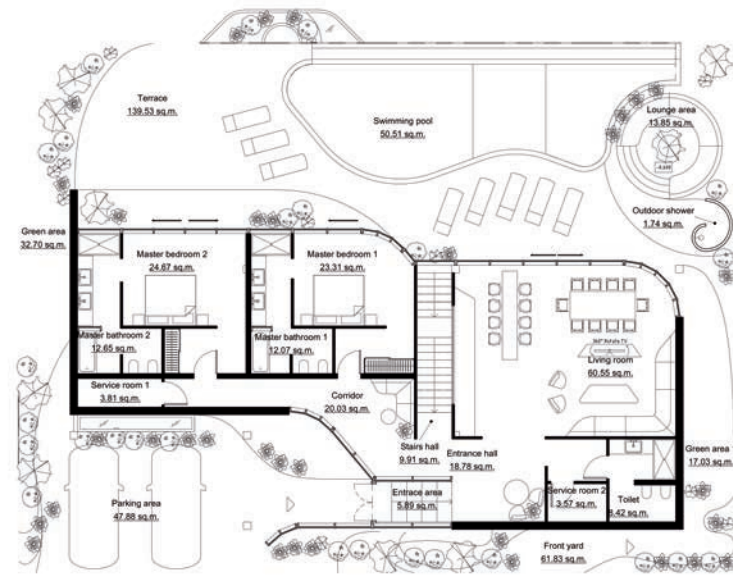
VILLA D

Anamaya features three styles of four bedroom villa, all maintaining an intimate relationship with the surrounding landscape yet each with its own individual character.

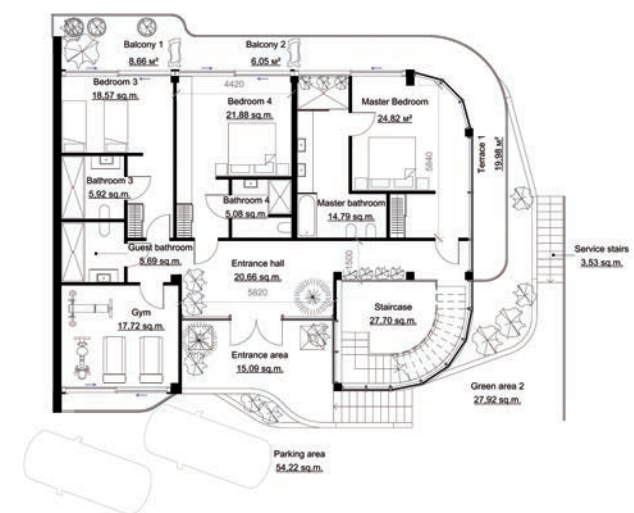
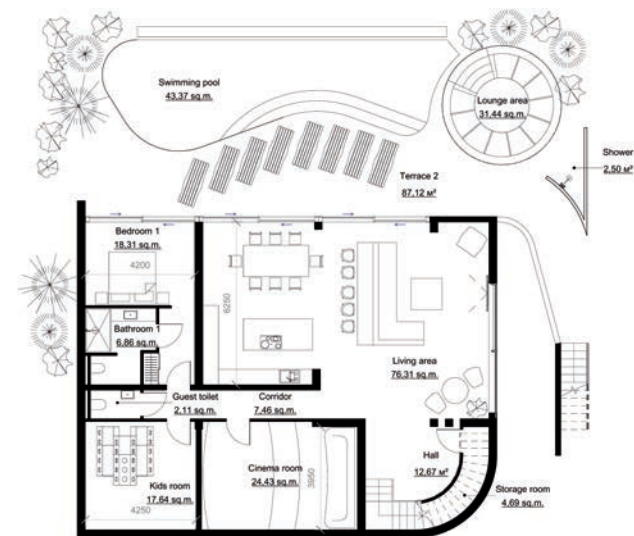
Villa D3 is set primarily on one floor with a self-contained suite on the lower level. Villas D1 and D2 feature a recreation room, private digital cinema, and gymnasium. D1 is the largest 4 bedroom villa and features a generous staff living area.

All villas are oriented to ensure the best ocean views from all points within the property and careful attention has been paid to ensure the privacy of every villa.

VILLA D1 4 Bedrooms, 718m²

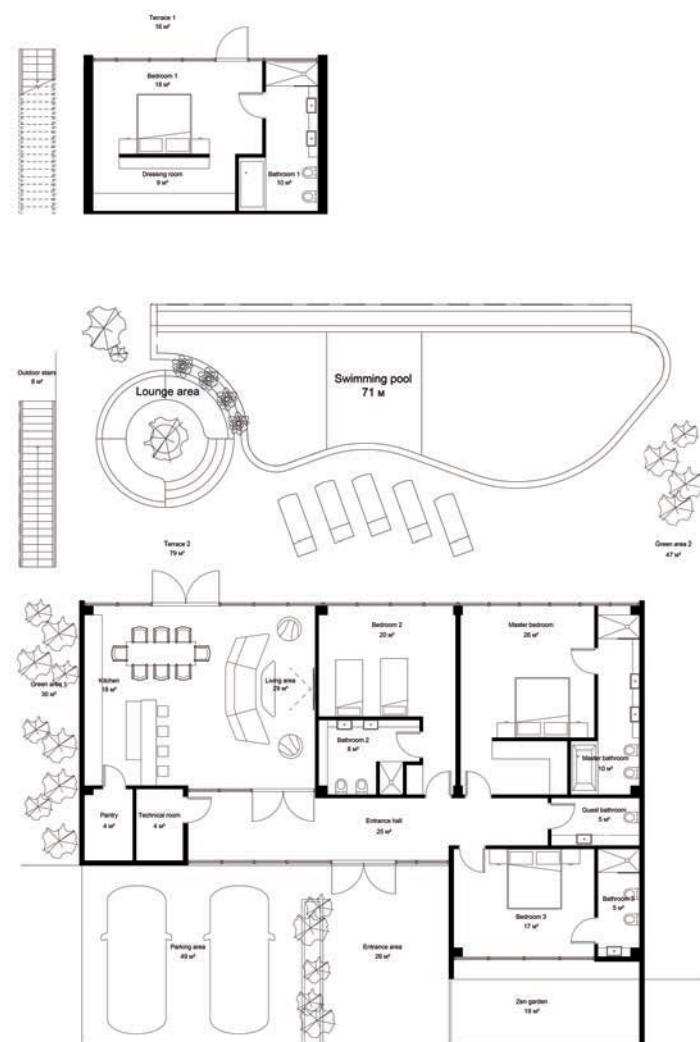


VILLA D2 4 Bedrooms, 576m²



VILLA D3

4 Bedrooms, 381m²



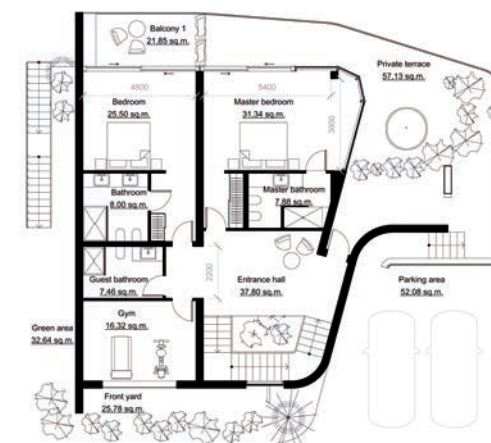
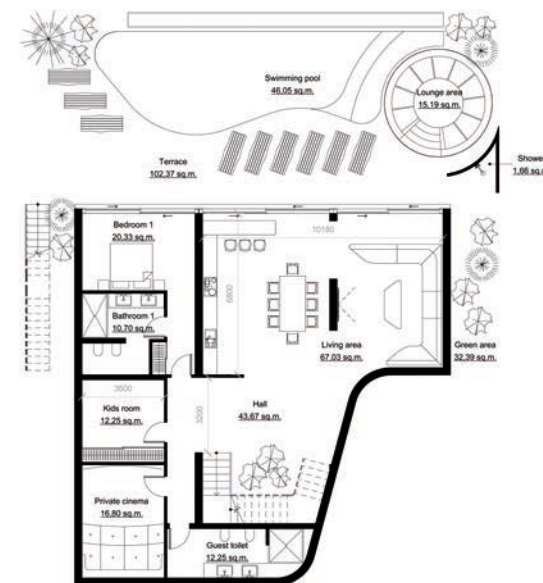


VILLA E

These villas share the same dramatic views and continue the seamless relationship between architecture and nature with aesthetic curves and balanced lines. As with all Anamaya properties, beautiful and long lasting materials such as travertine and hardwoods have been chosen to complement the architecture and landscape of these three bedroom villas. Care has been taken to ensure the highest level of comfort, utilising smart technologies for the control of lighting, shading, cooling and ventilation.

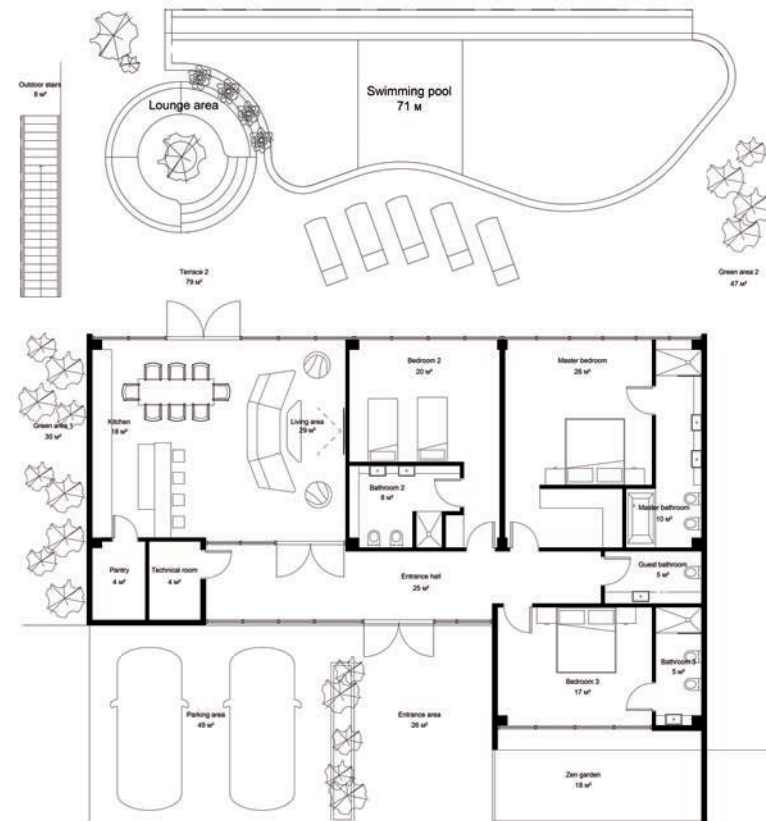
Villa E1 is the larger of these two properties and in addition to generous indoor and outdoor living space, also features a digital cinema, recreation room and private terrace with plunge pool off the master bedroom.

VILLA E1 3 Bedrooms, 580m²



VILLA E2

3 Bedrooms, 280m²





ANAMAYA CLUB

Villa owners and guests will have access to the Anamaya Club, an exclusive collection of facilities and services including:

- ▶ Rooftop pool with 270° sea views
- ▶ Restaurant and bar
- ▶ Function rooms
- ▶ Business centre
- ▶ Retail boutique
- ▶ Children's daycare centre
- ▶ Health and beauty spa
- ▶ Gymnasium
- ▶ Yoga studio
- ▶ Jogging track
- ▶ Tennis court
- ▶ Squash & racquetball court



PROPERTY MANAGEMENT

Anamaya villa owners have access to full property management services provided by renowned industry specialists In-Villa Luxuries, including:

MARKETING

- ▶ Prepare villa for the rental market.
- ▶ Promote the villa across local and international networks in 6 different languages.
- ▶ Organise professional photography and villa micro-website.
- ▶ Management of the calendar and bookings across multiple sources.

VILLA OPERATIONS

- ▶ Manage the maintenance and repairs of the villa.
- ▶ Provide villa and pool cleaning services during occupied and non occupied periods.
- ▶ English speaking Villa Manager to deal with our guests.
- ▶ Opening and maintenance of a villa bank account and book keeping services up to audit level.

GUEST MANAGEMENT

- ▶ Multiple language services including Thai, English, Chinese, Russian, French and Japanese.
- ▶ Full concierge services.



Due care has been taken in preparing the information in this brochure. However, due to supply conditions and the nature of operating in Thailand, all information, specifications and plans herein contained are subject to change as may be required. Reproductions, depictions, illustrations, 3Ds Renderings and Master Plans are artistic impressions and do not form part of the contract. Floor areas are approximate and are subject to the final survey, site topography and practical construction issues. Furniture is not included in the purchase price of villas and may be purchased as an optional extra.

