

A SIGNATURE COLLECTION OF LUXURY POOL VILLAS

oasis samui
lamai 



Impact Samui
Property Specialists

BMG
IMPACT

ALFA INVESTORS

oasissamui.com



About Koh Samui



Koh Samui is a beautiful tropical island sheltered in the crystal clear waters of the Gulf of Siam with secluded coves and white sand beaches fringed with palm trees... beaches holidaymakers dream about.

Inland the island boasts lush green rolling hillsides and coconut groves, picturesque waterfalls and magnificent ocean views.

With its stunning natural beauty, warm tropical climate and one of the highest concentrations of five star hotels and fine dining restaurants in the world, Koh Samui is now one of the top tourist destinations and investment hotspots in Asia.



Award Winning Development

Winner of 2017 Best Residential Development (Samui) Award - "Oasis Samui is a private estate of luxury pool villas, located in the lush tropical surroundings of coconut palms with views over the turquoise blue seas of Lamai".

From the same award-winning developer as "The Ridge" - www.theridgesamui.com - winner of "**Best Residential Development (Samui)**" **2014 - 2015** (Sold Out).

Luxury vacation residences and exceptional real estate investments.



Creating exceptional residential experiences



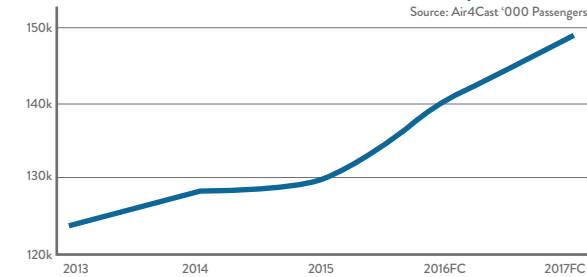
Investors

Koh Samui has evolved from a magnet for adventurers and backpackers to one of the top boutique island destinations in Asia.

Many consider it an ideal time to invest in a vacation property and here are several considerations for investors:

- Growing number of direct flights between China and Samui?
- New "City Status" means more funds for local government and increased spending on infrastructure
- Higher rental yields and longer rental season
- Increasing demand and limited supply of high-end villas
- Highest density of branded luxury hotels in Thailand outside of Bangkok
- Ranked 3rd by the New York Times' "41 Places to go"

Koh Samui Airport Arrivals



■ Total arrivals +20% ■ Chinese up by +37% ■ Daily flight departures 43

INVESTMENT OUTLOOK

"The strong growth in Chinese visitors is expected to continue with the increase of direct flights between Mainland China and Koh Samui. Further increase in flight frequencies and new ferry links to Koh Samui is expected to attract more visitors, while the future increase in luxury and upscale hotels will accentuate the island's position as one of Thailand's most prominent tourist destinations."

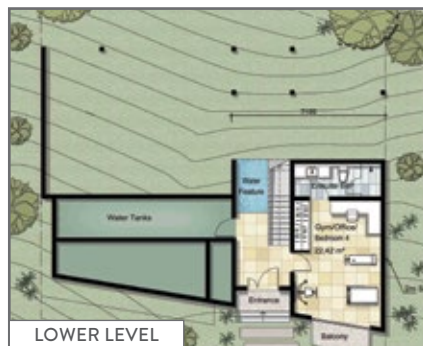
JLL "Hotel Destinations Thailand" Report 2016

oasis samui lamai

All Villas are directly accessible by car with exclusive parking areas. Generous land plots ensure privacy and the site masterplan and topography ensures sea views from all villas. Minimal running costs due to access to the public power grid, rainwater storage tanks and high quality construction. Full villa rental management provided.

AMETHYST VILLAS

Derived from the name of the precious stone, is a stylish villa with a spacious open-plan living, kitchen and dining space, with two master bedrooms upstairs enjoying perfect sea views, a third bedroom on the pool terrace level and the option of a fitness room, study or fourth bedroom downstairs.



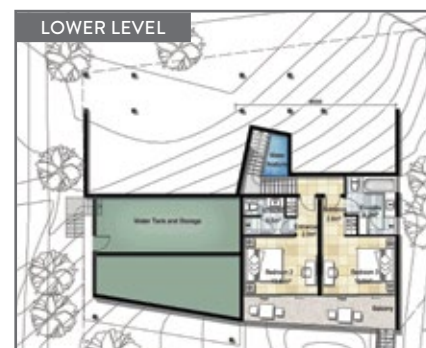
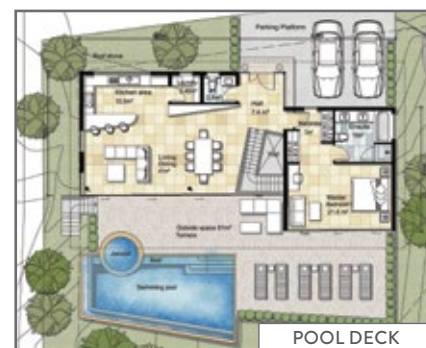
BIJOU VILLAS

Feature an extensive open-plan living, kitchen and dining space, with the master bedroom leading directly onto the pool deck and terrace with its stunning sea views. The second and third bedrooms are downstairs and, depending on the plot and topography, enjoy direct access to the garden areas.



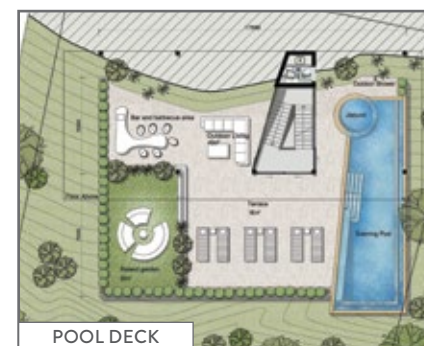
CRYSTAL VILLAS

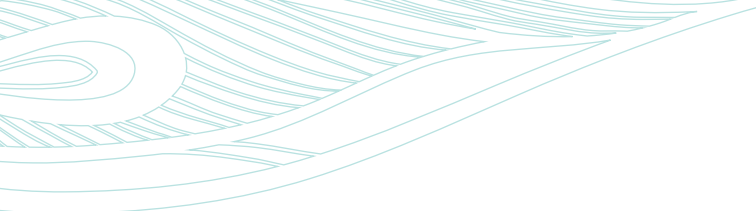
The Crystal Villas are located towards the highest part of the site and enjoy superior sea views. The open-plan living, kitchen & dining space opens out onto a spacious pool terrace, which combines perfectly for relaxing dinners or evening entertainment. Two master bedrooms and the third bedroom are located on the upper floor, while a fourth bedroom on the pool level has its own private terrace and direct access to the pool.



DIAMOND VILLAS

The largest, most luxurious and exclusive residences in the Oasis Samui development, with three separate floors of living space and spectacular panoramic sea views. The top floor features the living, kitchen and dining areas, together with one master bedroom. The second master bedroom, together with the third and fourth bedrooms, are located on the lower level, while the middle level highlights an expansive pool terrace, garden and outdoor living/bar-b-que area, the ideal outdoor space for entertaining guests.



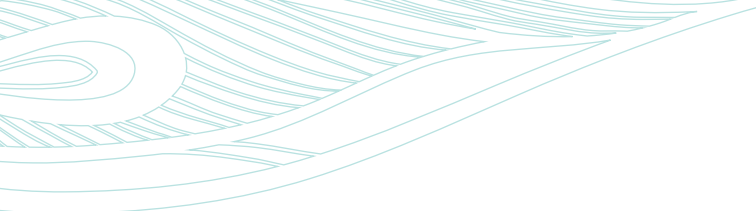


Contemporary
design set in nature



Absolute
attention to
detail





Fabulous range
of materials



Award winning
architecture

Meticulously embedded into the tropical landscape

- A private estate of 3-4 bedroom infinity pool villas
- Designed by an award-winning international architect
- Built by an award-winning developer
- Stunning turquoise blue sea views from each villa
- Just 5 minutes from the beach
- Located in the popular area of Lamai
- Excellent opportunity for rental income
- Full rental management on request

Villa Specification	Amethyst	Crystal	Bijou	Diamond
Bedrooms	3-4	4	3	4
Bathroom	4-5	4	3	6
Internal	230m ²	220m ²	185m ²	250m ²
External	105m ²	156m ²	90m ²	220m ²
Pool Size	25m ²	29m ²	30m ²	35m ²
Total Living Space	360m ²	405m ²	305m ²	505m ²
Parking	1 or 2 cars	1 or 2 cars	1 or 2 cars	1 or 2 cars



RESERVED
Diamond Villa 18

Diamond Villa 19
695m²

SOLD
Crystal Villa 15b

SOLD
Crystal Villa 15a

Crystal Villa 16
735m²

Diamond Villa 17
Under Construction
750m²

Amethyst Villa 5a
487m²

Amethyst Villa 5b
454m²

Amethyst Villa 6
497m²

SOLD
Crystal Villa 13

Bijou Villa 12
575m²

SOLD
Bijou Villa 10

Bijou Villa 11
Under Construction
488m²

Bijou Villa 9
585m²

RESEVRED
Amethyst Villa 2

SOLD
Amethyst Villa 3

Bijou Villa 8
708m²

Bijou Villa 7
685m²

Amethyst Villa 1
(3 Bedrooms)
566m²

Nature must be a partner

Nature provides the stunning backdrop of Overlap Stone, one of Samui's tourist attractions, together with natural cascading streams and enormous granite boulders.

All of these natural elements will not only be preserved in their original form but will be incorporated wherever possible into the geotechnical planning and architectural design of each individual villa, which means that each villa is truly unique.

Eco friendly practices continue throughout, with the re-planting of trees, rainwater collection systems and eco friendly pest control.



My Dream Thoughts.....



Impact Samui Ltd. 7/F, Ruttonjee House 11 Duddell Street. Central, Hong Kong
E: info@impactsamui.com **Thailand:** +66 (0) 62 989 9887 **Hong Kong:** +852 2110 8712